



ZOO FAN

2

YEAR WARRANTY

The ZOO Fan destratifies by producing a gentle column of air that draws warm air from the ceiling and forces it down to floor level. This creates a more comfortable, more productive indoor environment for occupants and has the potential to reduce energy consumption.

Environmentally conscious

ZOO Fans improve air circulation and thermal comfort in new and existing facilities with ceiling heights from 2.6m to 30m or more. They can also help to lower a building's running costs and reduce its carbon footprint.

Small fans, big savings!

ZOO Fans are the most efficient and effective small destratification fans on the market. Rigorous independent testing proves that ZOO Fans use less energy to move air. Installations often need fewer fans, which reduces installation costs, and lowers operating costs.

Ideal for supermarkets

ZOO Fans reduce condensation issues on refrigeration equipment in supermarkets. This reduces the occurrence of black mould and keeps the floor dry while eliminating hot or cold spots in the aisles.

Easy to control

Variable speed control allows fine tuning of air flow. The fans can be operated individually or together in zones. They can be controlled with one of the easy to use Aviator controllers or a Building Management System.

These fans go where others won't

They're easy to install around obstructions such as lighting or overhead cranes. Their directed column of air is perfect for aisles or avoiding sensitive areas. The ZOO Fans' enclosed housing will never cause a strobe effect with lighting or interfere with fire suppression equipment.

Fast payback

ZOO Fans create even temperatures from floor-to-ceiling and wall-to-wall which makes it easier and more efficient to heat or cool a building. HVAC systems run less and energy usage costs go down. Improve comfort and watch productivity increase. Typical payback periods of 1-3 years. Most of the ROI occurs in less than 2 years.

2 Convenient sizes available

The ZOO Fan is available in 2 sizes, 250mm and 300mm, and have been tested to ISO 5801: 2007 for air flow performance and BS848 Part 2: 1985 for sound performance.

Robust long lasting design

The ZOO Fan features a robust UV-treated PC ABS plastic housing that is fire resistant (5VB) and long lasting. It is fitted with an easy to reach IP54 terminal box and comes with Grippl attachments which makes it quick and easy to install.



Thermal Stratification results in significantly more energy consumption than necessary and often creates hot and cold spots in a building.

A ZOO FAN CREATES A GENTLE, CONCISE COLUMN OF AIR THAT BRINGS WARM AIR DOWN TO FLOOR LEVEL. IT CAN CREATE A MORE PRODUCTIVE, MORE COMFORTABLE ENVIRONMENT THAT HAS THE POTENTIAL TO REDUCE ENERGY USAGE.



Benefits

- Raises productivity
- Improves thermal comfort
- Lower energy costs

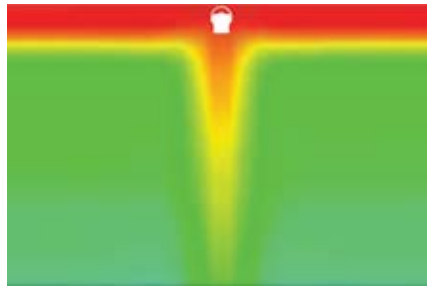
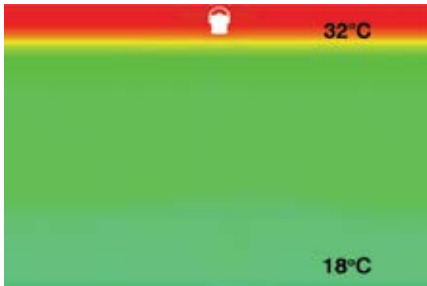
Applications

- Shopping centres
- Warehouses
- Distribution Centres
- Gymnasiums
- Theatres
- Airports
- Transportation Hubs
- Supermarkets
- Car dealerships

Savings

- Lowers energy consumption
- Reduces a facility's Carbon Footprint
- Maximises the efficiency of the HVAC systems
- Simplifies infrastructure equipment (fewer ducts and diffusers)
- Fast return on investment

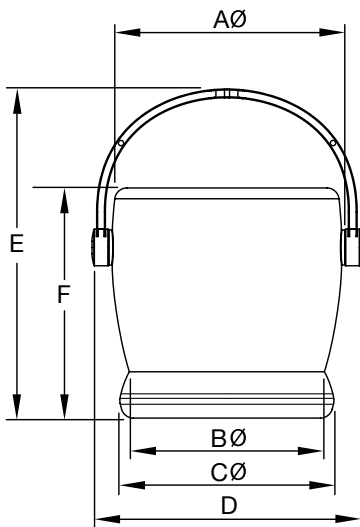
CFD SHOWING THE EFFECT OF A ZOO FAN



These thermal images are from a CFD (Computational Fluid Dynamics) showing the effects of Zoo Fans. They show a computer model of a 12.2 meter x 12.2 meter space with a 7.6 meter flat ceiling deck and a ceiling mounted heat source with a thermostat affixed 1.5 meters above the floor, set at 21°C.

The built-up heat at ceiling level is forced down when the ZOO Fan (represented by the white silhouette) is turned on.

De-stratification results in a more even temperature throughout the Zone Of Occupancy. Creature comfort improves noticeably and energy consumption is reduced, often significantly.



Model	ZFH30	ZFH30G	ZFH60	ZFH60G
Guards*	No	Yes	No	Yes
AØ	379	379	453	453
BØ	300	300	367	367
CØ	352	352	421	421
D	445	445	533	533
E	539	539	656	656
F	378	378	460	460

All dimensions in mm
*Finger guards on inlet and outlet

Model	ZFH30(G)	ZFH60(G)
Fan size (mm)	250	300
Fan speed rev/sec	23	21
Avg. dB(A) @ 3m	Inlet	37
	Outlet	38
Free air m ³ /hr	972	1908
Power Supply	230V/1Ph/50Hz	
kW	0.05	0.09
Amps	0.24	0.38
Max. operating temperature (°C)	55	55
Weight	7kg	9kg

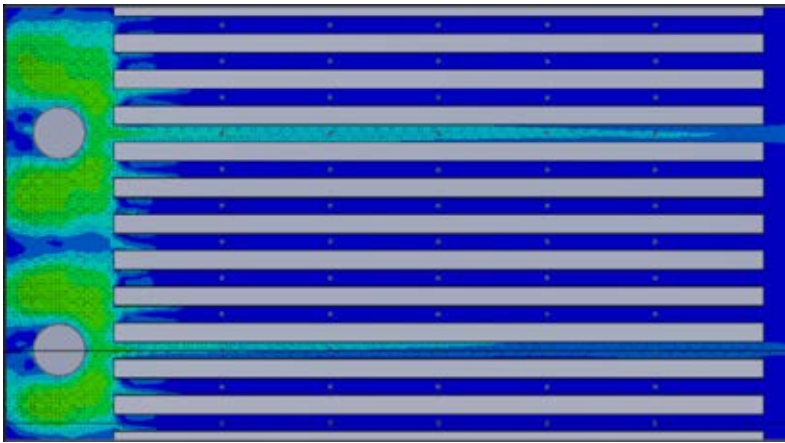
HVLS AND ZOO FANS GO HAND IN HAND

HVLS fans on their own are extremely effective at improving air circulation in open areas. However, in areas where obstructions affect the placement of a HVLS fan, adding ZOO Fans can optimise air flow.

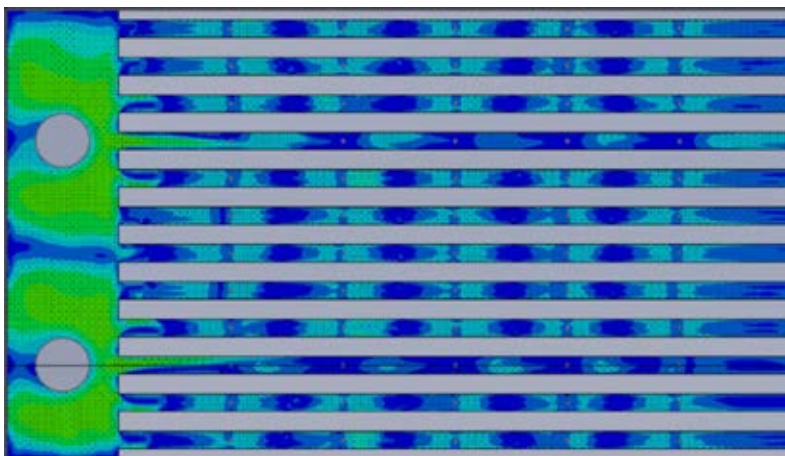
For example, in warehouses, HVLS fans on their own will not be able to reach down long aisles of racking.

Adding ZOO Fans will create much needed circulation throughout the aisles. This leads to a more comfortable indoor working environment for occupants.

Working together, the HVLS and ZOO Fans create a highly efficient air circulation and destratification system in any space, despite any obstacles the space presents.



Air velocities 1.83m above the ground
2 HVLS fans, no ZOO Fans



Air velocities 1.83m above the ground
2 HVLS fans, 60 ZOO Fans

