

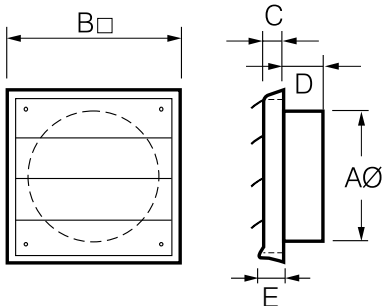
EPFL/PFL EXTERNAL FIXED LOUVRE GRILLE



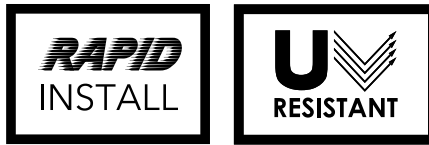
- Designed to withstand harsh outdoor conditions, made with impact & UV resistant PVC.
- Includes flywire mesh sheet to eliminate entry of insects.
- Available in 100mm, 125mm, 150mm & 200mm.

MODEL NO. (SINGLE UNIT ONLY)	MODEL NO. (FOR BULK PACK)	NO. OF GRILLES IN BULK PACK	DUCT DIAMETER AØ	B□	C	D
EPFL100PK	EPFL100	20	100	155	16	29
EPFL125PK	EPFL125	10	125	155	16	29
EPFL150PK	EPFL150	10	150	186	17	37
PFL200PK	PFL200	15	200	285	25	50

Dimensions in mm



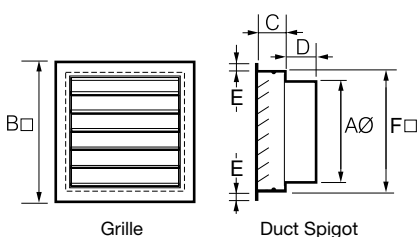
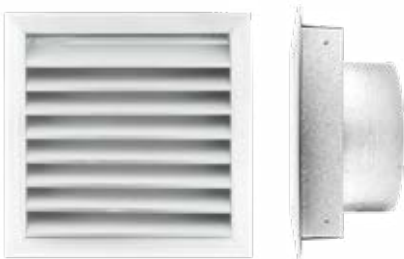
PGL EXTERNAL GRAVITY LOUVRE GRILLE



- Designed to withstand harsh outdoor conditions, made with impact & UV resistant PVC.
- Includes shutters that open when the fan is running and close when it is off.
- Available in 100mm, 125mm & 150mm.

MODEL NO. (SINGLE UNIT ONLY)	MODEL NO. (FOR BULK PACK)	NO. OF GRILLES IN BULK PACK	DUCT DIAMETER AØ	B□	C	D	E
PGL100PK	PGL100	20	100	155	15	25	18
PGL125PK	PGL125	10	125	155	17	28	20
PGL150PK	PGL150	10	150	185	15	35	20

Dimensions in mm



ALUMINIUM EXTERNAL FIXED LOUVRE GRILLE



- Comes with a galvanised steel spigot that fits inside the wall cavity, leaving the front face to finish flush to the wall.
- Its rigidly-fixed horizontal blades are designed to reduce the possibility of rainwater entry.
- Vermin proof mesh is fitted to minimise the entry of debris.

MODEL NO.	DUCT DIAMETER AØ	B□	C	D	E	F
ELDA200	200	297	60	95	20	250
ELDA250	250	345	60	95	25	300

Dimensions in mm



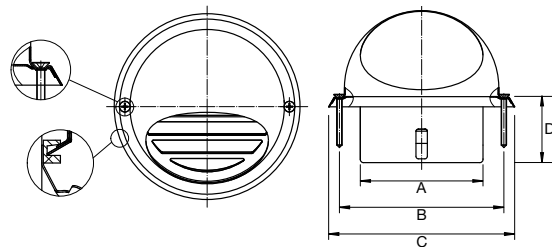
DOME VENT

FOR EXTERNAL MOUNTING



The Dome Vent EDVSS is designed for external wall mounting and can be installed within minutes. The stainless steel dome protects against harsh elements and the mesh screen prevents pests from entering. Perfect for extreme weather conditions. The valve body is equipped with a mounting gasket that forms an air tight seal.

- Ideal for extreme weather conditions.
- High quality 304 stainless steel.
- Includes mounting gasket.
- Cinder mesh with a 2mm aperture to comply with bushfire attack code BAL-40.

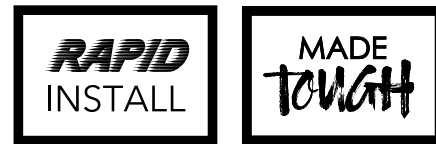


MODEL NO.	DUCT DIAMETER AØ	B	C	D
EDVSS100	100	130	147	50
EDVSS125	125	165	187	50
EDVSS150	150	189	210	60

Dimensions in mm

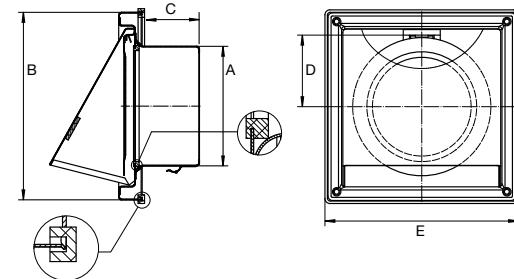
HOOD VENT

FOR EXTERNAL MOUNTING



The Hood Vent EHVSS is installed within minutes. Its gravity backdraft shutter prevents cold air flowing back into the room and insects from entering. Made from high quality stainless steel to minimise the risk of rust. It is perfect for regions with extreme weather conditions. The valve body is equipped with a mounting gasket that forms an air tight seal.

- Ideal for extreme weather conditions.
- Includes gravity backdraft shutter.
- High quality 304 stainless steel.
- Includes mounting gasket.
- Cinder mesh with a 2mm aperture to comply with bushfire attack code BAL-40.



MODEL NO.	DUCT DIAMETER AØ	B	C	D	E
EHVSS100	100	156	50	58	156
EHVSS125	125	180	50	66	184
EHVSS150	150	181	60	78	184

Dimensions in mm